

DESCRIPTION:

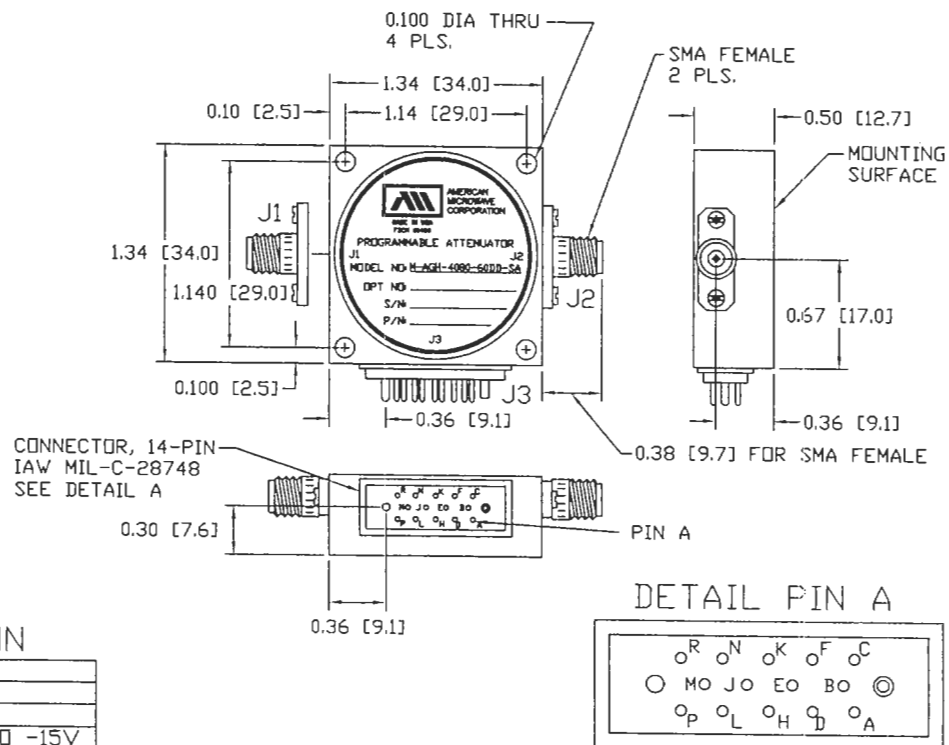
AMC MODEL M-AGH-4080-60DD-SA IS A HIGH SPEED OCTAVE BAND VARIABLE ATTENUATOR / MODULATOR, CONTROLLED BY 8 BIT BINARY LOGIC AND PACKAGED IN A MINIATURE HOUSING.

SPECIFICATIONS:

- FREQUENCY RANGE: 4.0 - 8.0 GHz
- INSERTION LOSS: 2.5 dB MAXIMUM
- VSWR: 2.0:1 MAXIMUM
- ATTENUATION FLATNESS: 0-10 dB ± 0.5 dB
10-20 dB ± 0.87 dB
20-40 dB ± 1.5 dB
40-60 dB ± 1.6 dB
- ATTENUATION DYNAMIC RANGE: 60 dB
- ATTENUATION ACCURACY: 0-30 dB ± 0.5 dB
30-50 dB ± 1.0 dB
50-60 dB ± 1.5 dB
- TEMPERATURE COEFFICIENT: ± 0.025 dB/ $^{\circ}$ C
- SWITCHING TIME: 500 nS MAXIMUM
- RF POWER RATINGS: +20 dBm OPERATING
+30 dBm SURVIVAL
- CONTROL: 8-BIT POSITIVE TRUE BINARY
- POWER SUPPLY: +12V TO +15V DC @ +150mA MAXIMUM
-12V TO -15V DC @ -75mA MAXIMUM
- CONNECTORS:
RF INPUT/OUTPUT: REMOVABLE SMA FEMALE
POWER & CONTROLS: MINIATURE 14 PIN MALE (MIL-C-28748)
MATING CONNECTOR FEMALE FURNISHED
- SIZE: 1.34" x 1.34" x 0.50"

REVISIONS				
ZONE	REV.	DESCRIPTION	DATE	APPROVED
-	-	ORIGINAL RELEASE JOB #108134-3	8/9/01	

MECHANICAL OUTLINE:



J3 PIN FUNCTION

PIN	FUNCTION
A	GND
B	N/C
C	-12V TO -15V
D	0.25dB(LSB)
E	0.5dB
F	1.0dB
H	4.0dB
J	2.0dB
K	16.0dB
L	32.0dB(MSB)
M	+12V TO +15V
N	8.0dB
P	GND
R	N/C

ALL DIMENSIONS ARE IN INCHES [MM]
TOLERANCES:
X.XX ± 0.020
X.XXX ± 0.010

ENVIRONMENTAL RATINGS:

- TEMPERATURE: -55 $^{\circ}$ C TO +85 $^{\circ}$ C (OPERATING)
-65 $^{\circ}$ C TO +125 $^{\circ}$ C (STORAGE)
- HUMIDITY: MIL-STD-202F, METHOD 103B CONDITON B
- SHOCK: MIL-STD-202F, METHOD 312B CONDITON B
- VIBRATION: MIL-STD-202F, METHOD 204D CONDITON B
- ALTITUDE: MIL-STD-202F, METHOD 105C CONDITON B
- TEMPERATURE CYCLE: MIL-STD-202F, METHOD 107D CONDITON A

NOTE: SPECIFICATIONS WILL VARY OVER OPERATING TEMPERATURE
NOTE: THE ABOVE SPECIFICATIONS ARE SUBJECT TO CHANGE OR REVISION

PART NO.		AMERICAN MICROWAVE CORPORATION FREDERICK, MARYLAND	
APPROVALS	DATE	TITLE	
<i>KAB</i>	8/9/01	PRODUCT FEATURE	
DRAWN		M-AGH-4080-60DD-SA	
REDRAWN	8/17/04	4 TO 8 GHz VARIABLE ATTENUATOR	
ISSUED	<i>PA</i>	SIZE	FSCM NO.
		A	60483
		DWG NO.	100-6164
		SCALE	N:S
		SHEET	1 of 3